



CAPE TOWN JUNE 2022 EDITION

NEWSLETTER

Dear Friends in Hockey,

Greetings from the Cape of Good Hope, which happens to be one of the most beautiful cities in the world. The World Masters Hockey World Cup 2022 in Cape Town is becoming a reality after it was confirmed that 88 teams from more than 23 countries had registered for the tournament. SA Masters and the City of Cape Town are excited to be hosting hockey lovers from all over the world.

We were reminded once again how privileged we are to play in some of the world's most picturesque venues during the SA Masters Interprovincial Tournament (IPT) held at the World Cup Astros from 28 April to 1 May 2022. This annual tournament features 1300 participants from 84 teams from across Southern Africa and is the highlight on the South African Masters hockey calendar.

We used the IPT to stress test most of our WC systems and I am very happy to report that we passed with flying colours! Our safety and security plans which have been formulated in close conjunction with the City of Cape Town Safety and Security team passed muster in all respects and all the participants enjoyed the IPT without a single incident.

Our medical contingencies were also stress tested as they are bound to be during a tournament consisting of close to 300 matches. We are very happy with the outcome from both a medical emergency as well as post-match recovery perspective. We have identified some areas which require work, but we are very confident that these areas will be addressed in the run to the WC.

Hotel bookings have increased nicely as the WC draws closer. I am proud of the excellent packages negotiated by our team. Please note that teams who book through our accommodation offering can also utilise our transport solution which represents real value for money. In addition to the tournament transport, Cape Town has an excellent e-hailing service to cater for individual transport requirements.

We hope you found the contents of this newsletter to be valuable. We are also very excited to introduce a fresh and vibrant logo for the WMH World Cup Cape Town 2022.

For the love of the game, Reg

Marais
President – SA Masters Hockey



Accommodation

The hotels are split into Southern Suburbs, closer to the fields (3 to 6 kms), City Centre (+/- 10 kms) and Sea Point (13 to 18 kms). Travelling to the playing fields from the City Centre and Sea Point will take roughly 15 to 30 minutes depending on the time of day.

All hotels are contracted from 29 September to 11 October 2022, but dates on either side can be secured - please email Diane or Louise on wc2020@highline.co.za with your additional dates and to make a booking.

On making a booking please note that a 25% deposit will be required, with final payment to be made 2 months prior to arrival date. Payments can be made either by credit card or an electronic funds transfer (all charges for payor's account). All monies will be held in a Trust account for security and protection purposes.

Please see the list of hotels below with rates, information and distance from playing fields.



Hotel rates include the following:

- Meet and Greet at Cape Town International Airport.
- Special discounted rates on accommodation on a bed & breakfast basis (except Apartments).
- Welcome drinks at the hotel on check in.
- Meeting room at hotel for team meetings.
- 24-hour back-up phone number for assistance.
- Insurance whilst travelling in South Africa - public & personal liability (please note that personal insurance is still required).
- Service desk.
- Assistance with, and allocation of, preferential time slots for practice rounds on the astro turfs.
- Discount vouchers at various restaurants.
- 20% discount on Classic ticket price on Hop On Hop Off bus tours (City Sightseeing).
- 10% discount on all helicopter flights with Cape Town Helicopters (Cape Town Helicopters).
- 5% discount on all cruises with IQ Catamarans (IQ Catamarans).
- Complimentary tour, 10% off & receive a Southern Cross Pendant with any purchase at Shimansky (Shimansky).
- Comprehensive transport solution - see below.

Transport Solution includes:

- Transfers to and from Cape Town International Airport (from 06h00 on 28 September till midnight on 11 October).
- Pre-scheduled Practice Match transport.
- Pre-scheduled Match Day pick ups from hotel to playing venues and return.
- Transport to and from official World Cup events, opening ceremony, dinners, etc.
- Shuttle service allows flexibility for players and officials to move between hotels and the playing fields.
- Shuttle service hours: Daily from 07h00 to 22h00 (from 29 September to 10 October).
- Control room that proactively manages and remotely tracks coach locations to enable players and officials to have up to date information on coach timings.
- Transport desk at fields to facilitate queries, schedules and bookings.
- Online transport communication group and contact numbers.

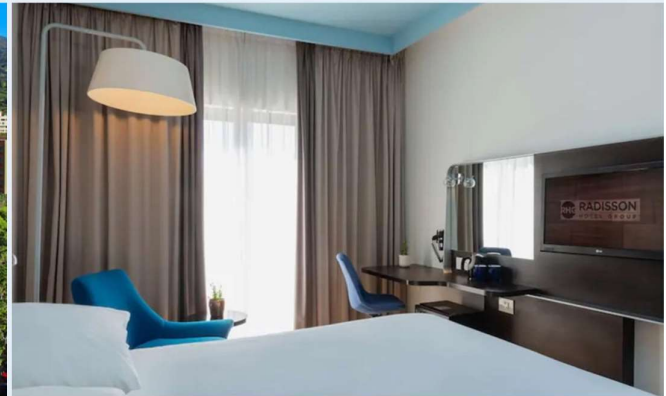


RATES ARE PER NIGHT AND INCLUDE ALL SERVICES STATED PREVIOUSLY SOUTHERN SUBURBS

Park Inn Newlands (4) - R1,135.00 per person sharing / R1,770.00 single*

Complimentary parking at the hotel / Complimentary high speed WiFi / Swimming pool / Gym / Restaurant / Complimentary tea & coffee in the lobby / Laundry service / Air Conditioning / Tea & coffee station in rooms / Mini Fridge / Electronic in-room safe.

Distance to playing fields: Approx 3-6 kms.



Southern Sun Newlands (4) - R1,230.00 per person sharing / R2,110.00 single*

[All twin rooms (room with 2 single beds) are sold out. Only rooms with 1 Double bed are still available] Complimentary parking at the hotel / Complimentary unlimited WiFi / Restaurants / Concierge / Dry Cleaning / Air Conditioning / Tea & coffee station / Mini Fridge / Electronic in-room safe / Complimentary access to Sports Science Institute fitness centre and Olympic sized Newlands swimming pool.

Distance to playing fields: Approx 3-6 kms.



CITY CENTRE

StayEasy City Bowl (3) - R850.00 per person sharing / R1,450.00 single*

Dedicated parking / Complimentary unlimited WiFi / Large in-room safe / Air conditioning / Restaurant at sister hotel adjacent / Swimming pool.

Distance to playing fields: Approx 7-13 kms.



SunSquare City Bowl (3) - R1,200.00 per person sharing / R2,050.00 single*

Secure basement parking / Complimentary unlimited WiFi / Large in-room safe / Air conditioning / Restaurant / Indoor plunge pool / Fitness centre.

Distance to playing fields: Approx 7-13 kms.



Garden Court Nelson Mandela Boulevard (3) - R1,130.00 per person sharing / R1,905.00 single* Dedicated parking / Complimentary unlimited WiFi / Electronic in-room safe / Air conditioning / Tea & coffee station / Restaurant / Swimming pool.

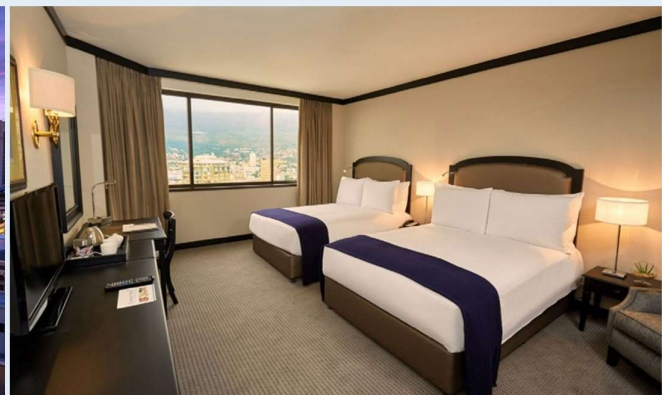
Distance to playing fields: Approx 4-8 kms.



Southern Sun Cape Sun (4) - R1,260.00 per person sharing / R2,170.00 single*

Secure undercover parking / Complimentary unlimited WiFi / Indoor swimming pool / Restaurants / Fitness centre / Spa / Concierge / Dry cleaning / Electronic in-room safe / Air conditioning / Tea & coffee station.

Distance to playing fields: Approx 8-12 kms.



Southern Sun Waterfront (4) - R1,355.00 per person sharing / R2,360.00 single*

Secure undercover parking / Complimentary unlimited WiFi / Outdoor swimming pool / Restaurant / Fitness centre / Day spa / Concierge / Dry cleaning (next day) / Electronic in-room safe / Air conditioning / Tea & coffee station / Complimentary shuttle to V&A Waterfront.

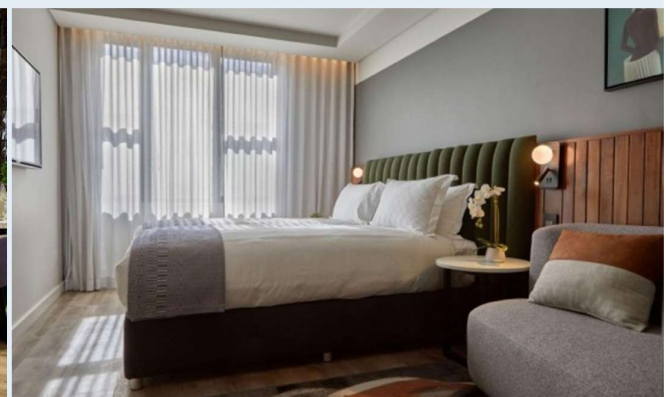
Distance to playing fields: Approx 8-13 kms.



The Rockefeller (4) - R1,450.00 per person sharing / R2,400.00 single*

Secure hotel parking / Complimentary unlimited WiFi / Concierge / Laundry services / Rooftop bar / 24-hour Deli & Sushi bar / Fitness centre / Electronic in-room safe / Air conditioning / Iron & ironing board / Mini bar / Bottled water daily.

Distance to playing fields: Approx 7-11 kms.



SEA POINT - Hotels

The President Hotel (4) - R1,355.00 per person sharing / R2,260.00 single*

Undercover parking / Complimentary unlimited WiFi / Outdoor infinity pool / Curio shop / Spa, hair salon & nail bar / Concierge / Restaurants / Laundry & dry cleaning services / Fitness centre / Electronic in-room safe / Air conditioning / Semi self-catering kitchenette / Complimentary mineral water.

Distance to playing fields: Approx 13-18 kms.



Premier Hotel Cape Town (4) - R1,640.00 per person sharing / R2,280.00 single*

On-site parking / Complimentary unlimited WiFi / Swimming pool / Restaurant / Laundry & valet / Electronic in-room safe / Air conditioning / Tea & coffee facilities.

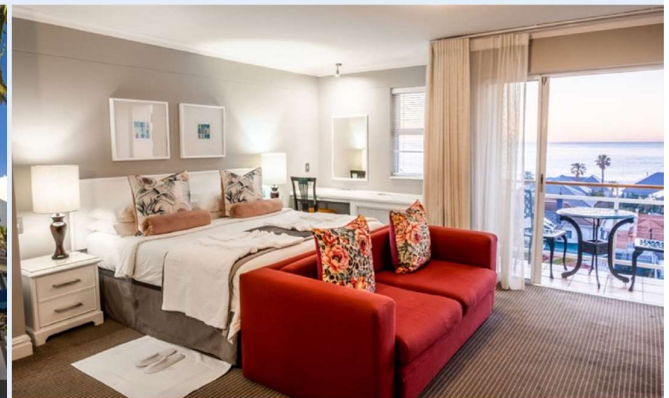
Distance to playing fields: Approx 12-17 kms.



Bantry Bay Suite Hotel (4) - R1,512.50 per person sharing / R2,085.00 single*

Secure parking / Complimentary unlimited WiFi / Swimming pool / Restaurant / Fridge / Electronic in-room safe / Air conditioning / Self-catering kitchenette / Tea & coffee making facilities / Laundry & dry cleaning.

Distance to playing fields: Approx 13-18 kms.



SEA POINT - Apartments (Apartment only)

Latitude Aparthotel (4) - Security breakage deposit of R1,000.00 on check in*

Standard 1 Bedroom (1 bedroom with Queen bed) - R3,165.00 per night

Standard 2 Bedroom (1 bedroom with King bed / 2nd bedroom with twin beds) - Mountain facing - R4,870.00 per night

Superior 2 Bedroom (1 bedroom with King bed / 2nd bedroom with twin beds) - Ocean facing - R5,820.00 per night

Standard 3 Bedroom (2 bedrooms with Queen bed / 3rd bedroom with twin beds) - Mountain facing - R6,420.00 per night

Superior 3 Bedroom (2 bedrooms with Queen bed / 3rd bedroom with twin beds) - Ocean facing - R7,000.00 per night

Secure undercover parking / Serviced daily / Fully equipped kitchens / Balcony with barbeque facilities / Complimentary high speed WiFi / Rooftop swimming pool / Latitude Cafe / Electronic in- room safe / Air conditioning.

Distance to playing fields: Approx 13-18 kms.



For more information and/or to make a booking please contact:
Diane or Louise on wc2020@highline.co.za

ACTIVITIES

An Activities Desk will be available where enquiries and bookings for transfers, half day tours, full day tours, adventure tours, pre- and post tours, safaris, Garden Route tours and many more can be booked.

Besides the many activities such as the Cape Peninsula Tour, Winelands Tour, Robben Island Tour, Whale Tour, Great White Shark Diving, Township Tour and many more, have a look at the below tours which may wet your appetite.

Safari (Half day, Full day or Overnight tours) from Cape Town

Just 2 hours from Cape Town, situated in the historic town of Touws River, in a valley between the Langeberg and the Outeniqua Mountains in the Karoo, the 10,000 hectare conservancy has evolved from its early days of being residence to various antelope species only to becoming the home of the Africa's Legendary Big 5. A unique opportunity to see Lion, Rhino, Buffalo, Elephant & Leopard, as well as Giraffes, Waterbuck, Oryx, Kudu, Lechwe, Zebra, Bontebok, Red Hartebeest, Springbok, Gemsbok, Steenbok, Caracal (Lynx) Blesbok, Fox, Jackal, Baboon, Black Wildebeest, Cheetah, Impala & Hippo's. Additional wildlife and flora is available to view on the once-in-a-lifetime game drives.

Half day tour: Includes Welcome Drinks, 2-3 hour Game Drive & Buffet Lunch.

Full day tour: Includes Welcome Drinks, Buffet Breakfast, 2-3 hour Game Drive & Buffet Lunch.

Overnight tour: Includes Accommodation as well as Welcome Drinks on arrival, Buffet Lunch, 2-3 hour Game Drive, Buffet Dinner, 2-3 hour Game Drive and Buffet Breakfast.

Kruger National Park safari - 3 Day / 2 Night

Travel to the Kruger National Park for an unbelievable encounter with the Infamous Big Five. Lion, Leopard, Rhinoceros (both black and white species), Elephant, and Cape Buffalo. The term "Big Five" was coined by big-game hunters and refers to the five most difficult animals in Africa to hunt on foot. Visit The Elephant Sanctuary for an hands-on interactive and educational elephant experience.

Includes: Return Transfers, Elephant Encounter, full day Safari Game Drive, 2 nights' Accommodation on a Dinner, Bed and Breakfast basis.

Excludes: Lunch, drinks & flights.

***PLEASE NOTE:** The transport departs from OR Tambo International Airport in Johannesburg to Kruger Park promptly at 10h00 and arrives back at the airport in Johannesburg on the last day at approximately 18h00. (Please note these times when booking flights).



Garden Route package - 3 Day / 2 Night

Travel to the charming town of Oudtshoorn, situated in the Klein Karoo, home to South Africa's ostrich farm industry and the world famous Cango Caves. Visit Knysna which is situated between lush forests and the shores of a peaceful lagoon and offers a wide variety of activities and attractions. Then venture on a 4x4 Safari, on a Private Game Reserve, one of the biggest attractions on the Garden Route.

Includes: Entrance fees as stipulated, Tour Guide, Air-Conditioned vehicle, 2 nights' Accommodation on a Dinner, Bed and Breakfast basis and a 2 hour Safari.

OUTDSHOORN

- Wine Tasting in Robertson
- Visit an Ostrich Farm
- Dinner and overnight in Oudtshoorn

KNYSNA / PLETTENBERG BAY

- Cango Caves
- Swartberg Mountain Pass
- Lunch @ "Kobus se Gat" or similar
- Knysna Waterfront
- Elephant Park (optional)
- Dinner and overnight in Knysna

MOSSEL BAY

- Safari tour on a Private Game Reserve
- Return to Cape Town in the afternoon

For more information, other tours as well as rates please contact Diane or Louise on wc2020@highline.co.za

VISAS

For any queries on Visa Requirements or Visa Letters please contact Diane or Louise on wc2020@highline.co.za, otherwise please visit the South African Department of Home Affairs website for all requirements - Applying for a South African visa.

You will need to apply for your visa in your home country. Your accredited Travel Agent in your country will also be able to assist you with queries as well as applying.

ASTRO BOOKINGS

We have received astro slot booking requests for the day leading up to the start of the World Cup on

1 October 2022. Anyone who wishes to reserve astros should contact Andy Stofberg at: andy@psihockey.co.za.

